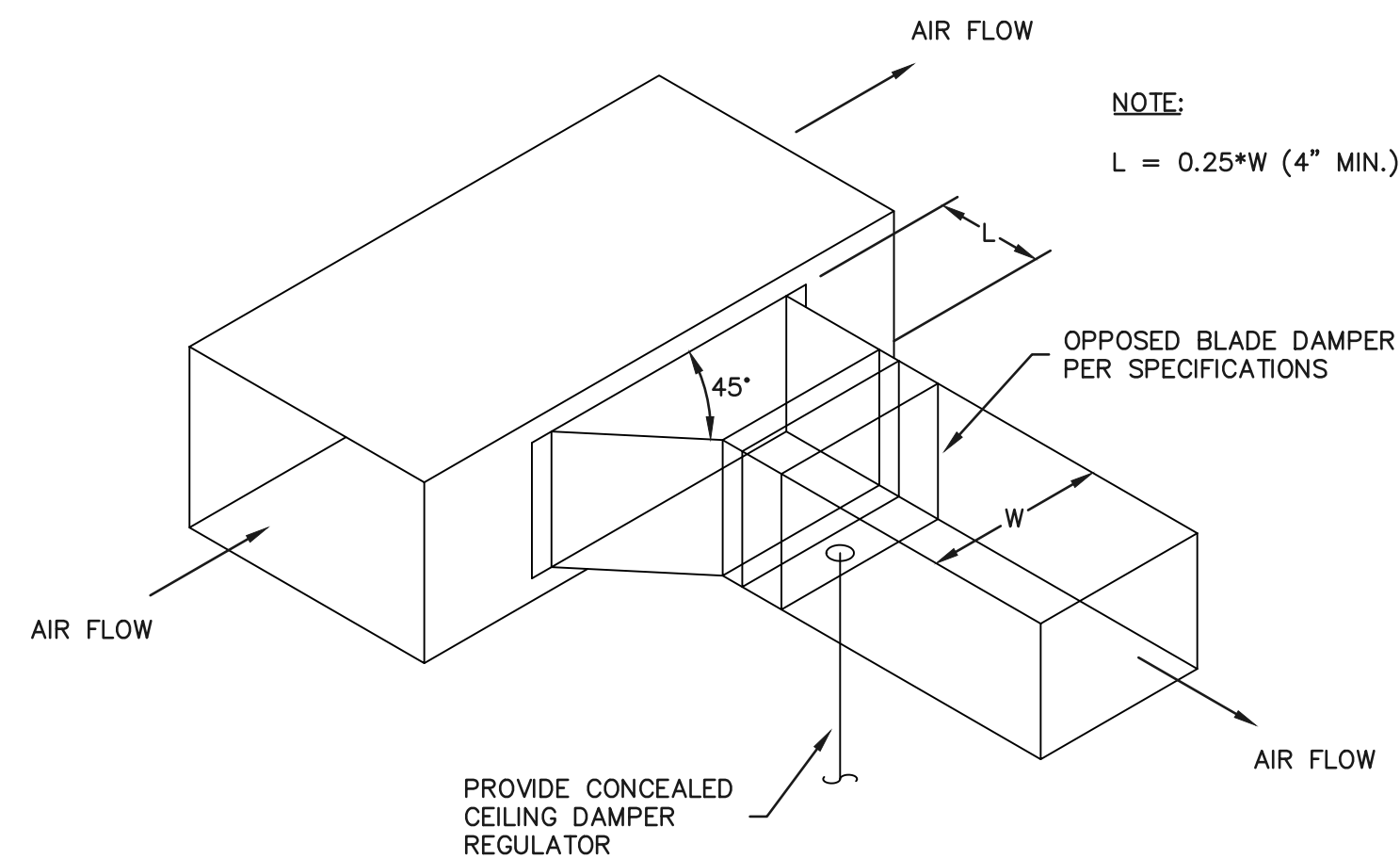


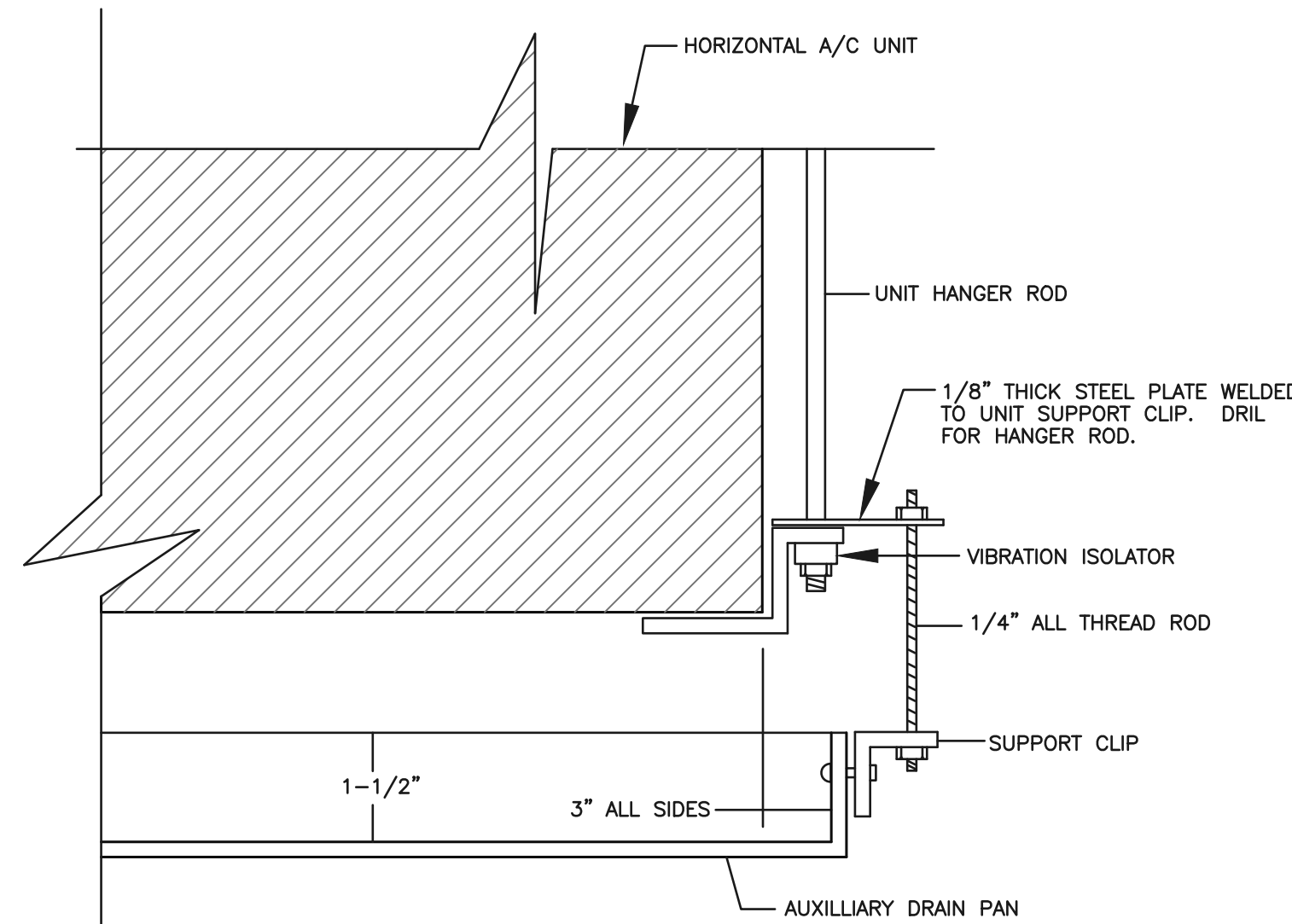
NOTE:

MAX. FLEXIBLE DUCT LENGTH 6'-0" (INCLUDING VERTICAL DROP)

DETAIL - ROUND DUCT BRANCH TAKE-OFF
NO SCALE



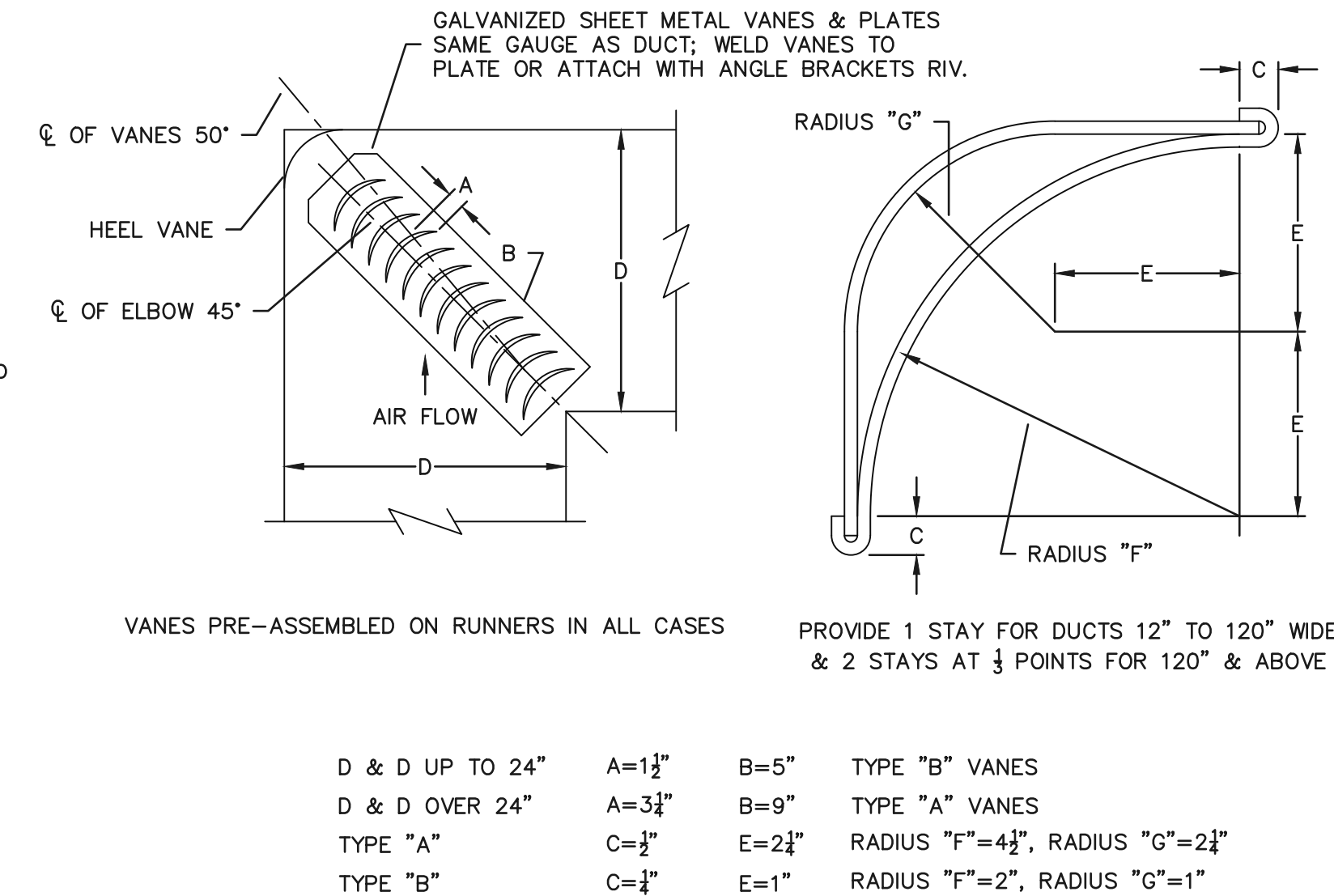
BRANCH DUCT TAKE-OFF @ SUPPLY MAIN
RECTANGULAR BRANCH DUCT
NO SCALE



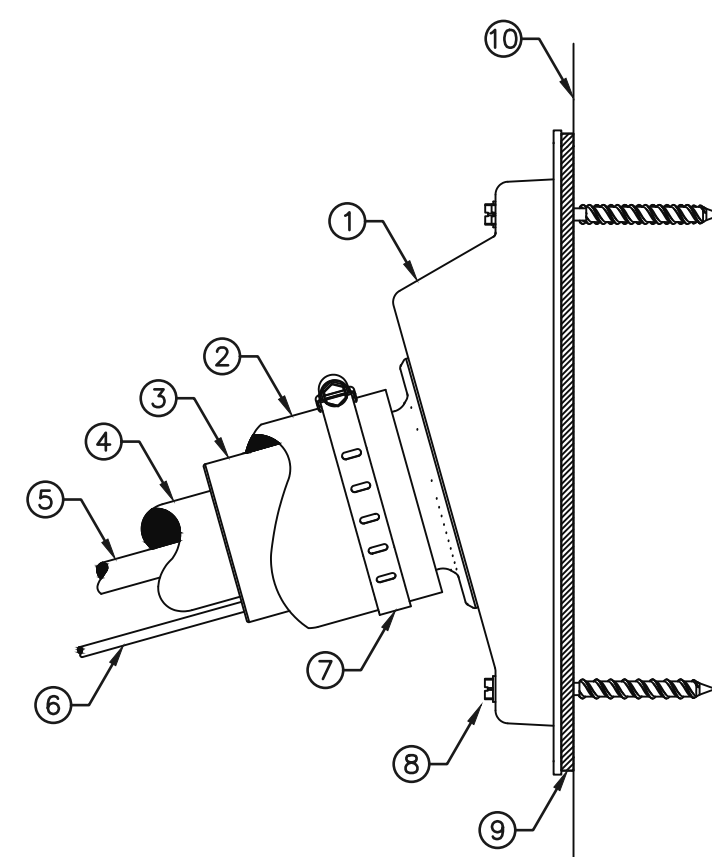
NOTES:

1. PROVIDE FLOAT SWITCH IN THE AUXILIARY DRAIN PAN TO TURN OFF THE UNIT IN CASE OF OVERFLOW.
2. DRAIN PAN SHALL BE INSTALLED SO AS NOT TO HINDER THE REMOVAL OF THE FILTERS.

DETAIL OF AUXILIARY DRAIN PAN
NO SCALE



SQUARE ELBOW DETAIL
NO SCALE



NOTES:

1. SEAL PENETRATION OUTLET WITH ELASTOMERIC LINE SET COMPRESSION SLEEVE TYPE "TITAN GS30" BY AIREX MANUFACTURING INC.
2. ELASTOMERIC INSULATION WITH PROTECTIVE PVC COVER.
3. ELASTOMERIC LINE SET COMPRESSION AND ANTI-VIBRATION SLEEVE.
4. ELASTOMERIC INSULATION FOR REFRIGERANT PIPING.
5. REFRIGERANT SUCTION LINE.
6. REFRIGERANT LIQUID LINE.
7. MECHANICAL CONNECTION SECURED WITH STAINLESS STEEL CLAMP.
8. SELF-TAPPING 3/8" HEX HEAD 1/4" DIAMETER ANCHOR SCREWS WITH ELASTOMERIC WASHERS.
9. ELASTOMERIC GASKET FOR WALL SURFACE SEAL.
10. BUILDING WALL OR PARAPET.

REFRIGERATION PIPE PENETRATION DETAIL
NO SCALE